

CHORDS

C Major Scale

Major chords are formed by using the 1st, 3rd and 5th notes in the major scale

Every major scale moves through, tone, tone semitone, tone, tone, tone, semitone.

Here is the scale of G major - Write the G major chord

Write out the G major scale and place the tones and semi tones in the correct place

Write out the following scales followed by the major chord. Write the scale again and note the placement of tones and semitones.

18 D major

27 E Major

36 F Major

45 Bb Major

54 Eb Major

63 C Major

72 A Major

Write these chords in the bars

81 A Major E Major C Major F Major E Major Eb Major A Major F Major D Major

90

Minor Chords

The minor chord is taken from the major scale, but the third note is lowered.

99 A Major 3 5 A Minor Chord This E Major Scale is used for the E minor Chord

The C# becomes a C natural

E Minor Chord

First write out the major scale for each key. Write the triad (chord) then lower the third note as I have done in this example.

108 C Major Scale C Major Chord C Minor Chord

Note how the third note is flattened.

Write out major scale first then the major and minor triad for each key

117 G A

126 E F

135 C D

144 Bb Eb

MINOR HARMONIC SCALE

Minor harmonic scales have the third note of the scale lowered and the seventh note raised when ascending and descending.

153 1 2 3 4 5 6 7 8

A Minor Harmonic

See how the minor chord is made from the 1st, 3rd and 5th degrees of the scale.

161 C Major A minor

This minor scale was formed from it's relevant major which is three semitones up - C Major

Both scales have the same keysignature of no sharps or flats.

Practise writing out the Aminor Harmonic Scale. Play it on your instrument so you can recognise the sound.

169

178

MINOR SCALE AND CHORD EXERCISES

187 Scale of F Major - Key signature - One Flat Bb



D minor is the relevant minor of F major - Note the same key signature of one flat - Bb
The seventh note is raised. C#)

195 D Minor Chord

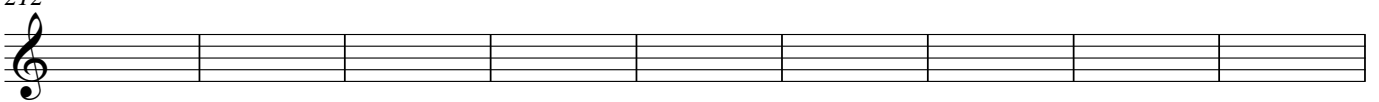


Write out the following harmonic minor scales and their minor triad or chord

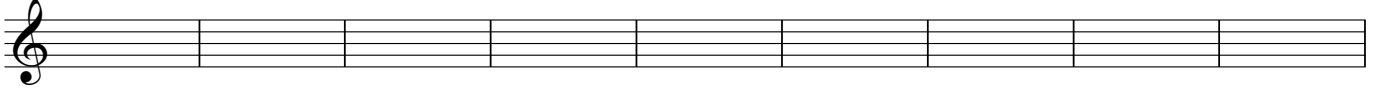
E minor harmonic



212 G minor harmonic



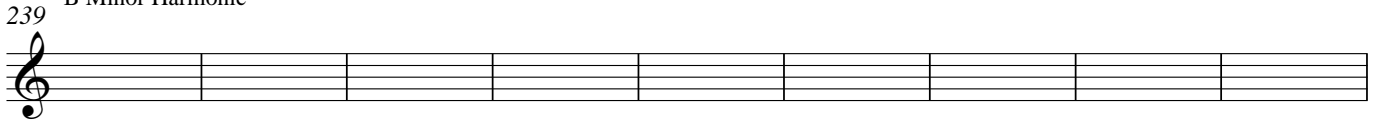
221 A minor harmonic



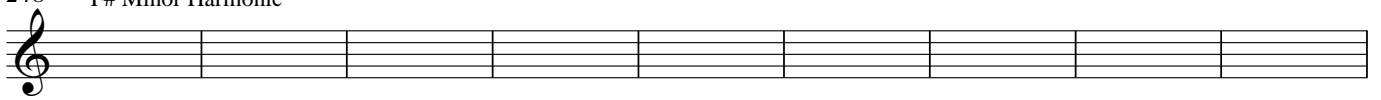
C Minor Harmonic



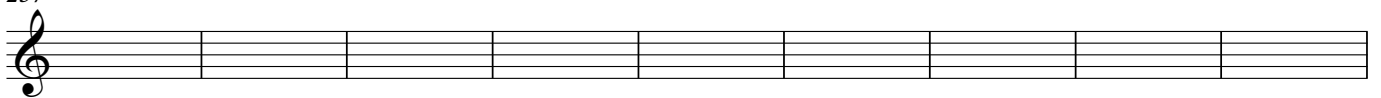
B Minor Harmonic



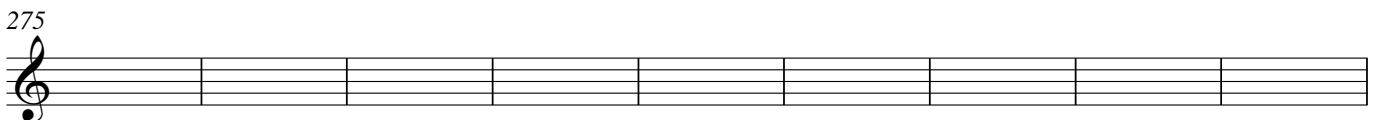
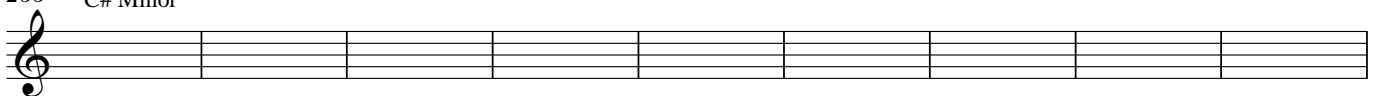
F# Minor Harmonic



D Minor Harmonic



C# Minor



Key Signatures and Chord

4

284 C Major

1st tetrachord | 2nd tetrachord

Take the second tetrachord and make it the first. Then add the next four notes. Remember to sharpen the seventh note each time and continue to use the sharps you have already accumulated.

292 1 2 3 4 5 6 7 8 G Major Triad

1st tetra chord | 2nd #7th note

300 D Major Triad

1st tetrachord | 2nd tetrachord

307 A Major Triad

1st tetrachord | 2nd tetrachord

314 E Major Triad

1st tetrachord | 2nd tetrachord

321 B Major Triad

1st tetrachord | 2nd tetrachord

328 F# Major Triad

1st tetrachord | 2nd tetrachord

334 C# Major Triad

1st tetrachord | 2nd tetrachord

Now rewrite the scales yourself using the formula shown on the previous page. Take the second tetrachord and add the next four notes. Remember to add the sharps you have obtained each time and sharpen the seventh note in the new scale.

340 C Major



349 G Major



358



367



376



385



394



403



412



421



430



439



448



457 C Major Scale - The Flat Key Signatures

1 2 3 4 5 6 7 8

The flat key signatures work on fours. The fourth note of the scale is flattened each time. Watch how the pattern works, then copy out again for yourself. The second to last flat in the key signature is always the name of the key.

465 F Major Triad

1 2 3 4 5 6 7 8

See how the first scale has started on the fourth note of the C Major scale, and then the fourth note has been flattened, creating the scale of F major with a Bb in the key signature.

473 Bb Major Triad

481 Eb Major Triad

489 Ab Key Signature

497 Db Major Triad

504 Gb Major Triad

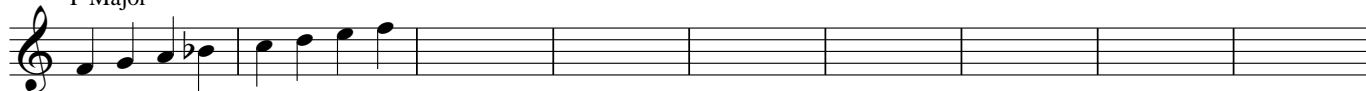
511 Cb Major Triad

Now re-write the flat key signatures out on this page. Remember to continue with existing flats and flatten the fourth note each time.

518 C Major



527 F Major



536



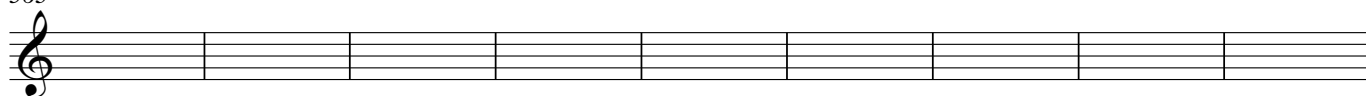
545



554



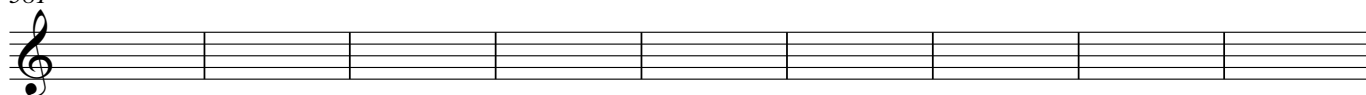
563



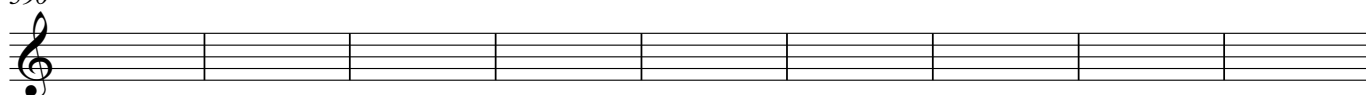
572



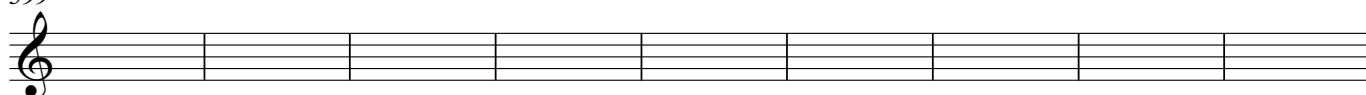
581



590



599



608



617



CHORD PRACTISE

Write out the chords as directed

626 C Dmin a min A

C (Capital letters are major and minor chords will be written as C min or cmin)

636 D F Bb A min G min E C# min Db Ab

645 Gb F min Abmin c min d min G B B min D

654 C E Eb Emin F# Ebmin Bb C# Db

663 a min Fb Cb C d min G G min A B

672 Eb Ebmin Cmin Ab G D E f min F

681 Ab min Fmin D B C Eb Ab Db G

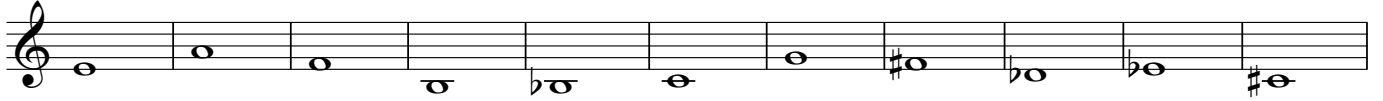
690 E Emin e min G C C min c min Eb Bb

699 G g min G E min e min C# min C Bb Ab

708 a min b min c min d min e min f min g min Ab min Bb min

717 A B C D E F# G Bb Db

726



737



WRITE THE MAJOR TRIAD STARTING ON THE GIVEN NOTE

748



759



WRITE THE MAJOR SCALE STARTING ON THE TONIC NOTE INDICATED

770



778



786



794



802



WRITE THE HARMONIC MINOR SCALE WHICH STARTS ON THE NOTE INDICATED

10
811

819

827

835

844

**NEW TYPES OF CHORDS
SIXTH CHORDS**

SIXTH CHORDS ARE FORMED BY TAKING THE 1ST, 3RD, 5TH AND SIXTH NOTES OF THE MAJOR SCALE

853 C6 1 2 3 4 5 6 7 8 F 6 G 6

CREATE 6TH CHORDS ON THESE NOTES. PLAY THEM ON YOUR INSTRUMENT`

862

MINOR SIXTHS CAN ALSO BE CREATED BY ADDING THE SIXTH NOTE OF THE MAJOR SCALE INTO THE TRIAD

873 C major scale C Minor Harmonic scale Take first, 3rd lowered and 5th and add sixth note of major scale

Cmin 6

MAKE MINOR SIXTH CHORDS FROM THESE NOTES

881

892

SEVENTH CHORDS

Take the 1st, 3rd, 5th and 7th lowered a semitone to create a 7th chord

902 C7 1 2 3 4 5 6 7b 8 1 2 3 4 5 6 7(b) 8 G7

Write 7th chords on these notes. (note they will be major chord)

910

MINOR SEVENTH CHORDS

C minor 7 - 1st, 3rd lowered, 5th, 7th lowered

921 1 2 3(b) 4 5 6 7(b) 8 G min 7 A minor 7

WRITE MINOR SEVENTH CHORDS FROM THESE NOTES

930

c Major 7 is created by taking the 1st, 3rd, 5th and 7th notes unaltered from the major scale.

941 1 2 3 4 5 6 7 8 Cmaj7

Create major seventh chords from these notes.

950

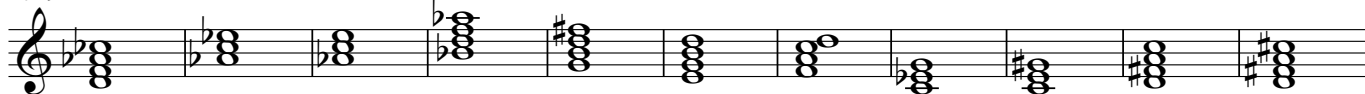
TEST

Name these chords

1038



1049



1060



WRITE THE FOLLOWING CHORDS

1071 Cmin7 G A dim F maj7 E 6 Fmin 6 F 7 C dim A aug

1080 G7 Emaj7 E F# F# min D7 A maj 7 A 6 Bb 7

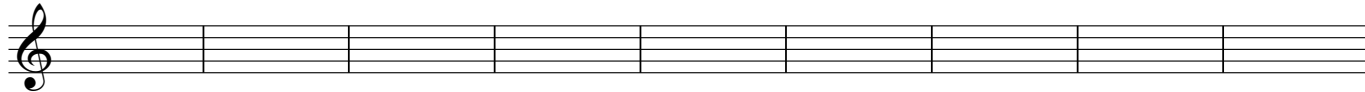
1089 Eb Eb 6 Bb maj 7 C min7 C aug D aug D dim Eb dim F 9

1098 E maj7 Bb dim Bb aug D aug E 7 F# 7 B min B dim B 7

1107 Ab dim Ab F min D min c min A + B+ Fdim

Manuscript

1116



1125



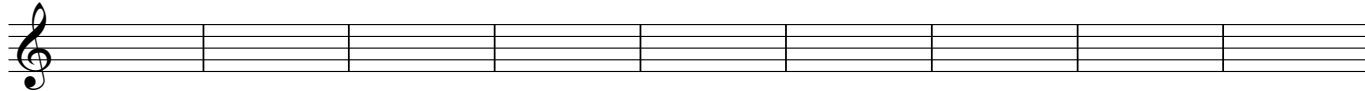
1134



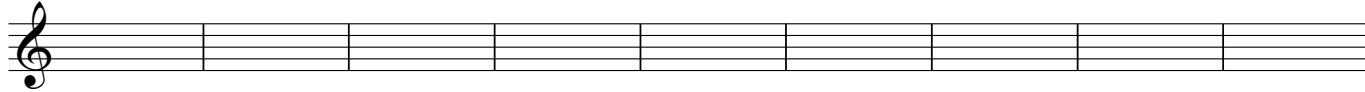
1143



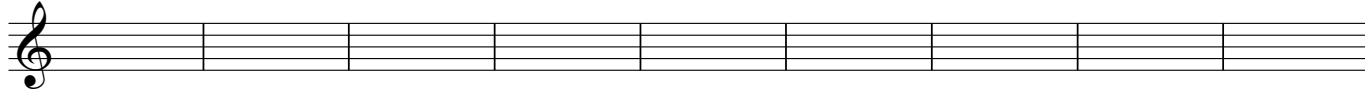
1152



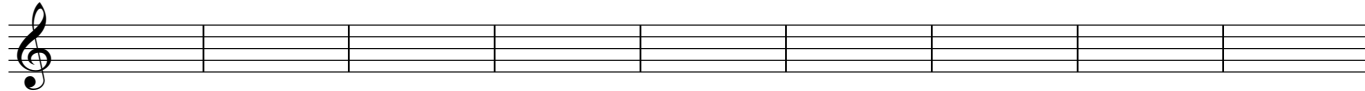
1161



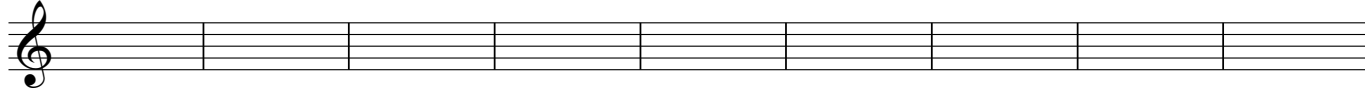
1170



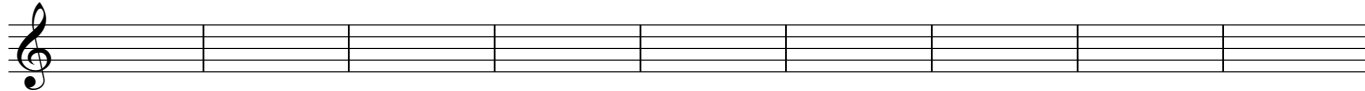
1179



1188



1197



1206

