

THEORY LEVEL TWO

Review notes learnt from Level One.

Semibreve Minim Crotchet Quaver Dotted Minim
 Whole Note (4) Half Note (2) Quarter Note (1) Eighth Note (1/2) Dotted Half Note (3)

Review Rests from Level One

Semibreve Rest (4)
 or Whole of Bar rest Minim Rest (2) Crotchet Rest (1) Quaver Rest (1/2)

Review Note Names

C D E F G A B C D E F G

Treble Clef

A B C D E F G A B C
 Bass Clef Notes

Stave or Staff

Bar Line

Double Bar Line

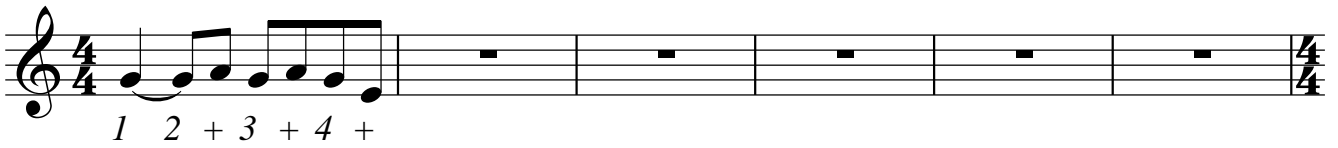
DOTTED NOTES

1 2 + 3 4 +

Dotted Crotchet
 (1 1/2 beats)

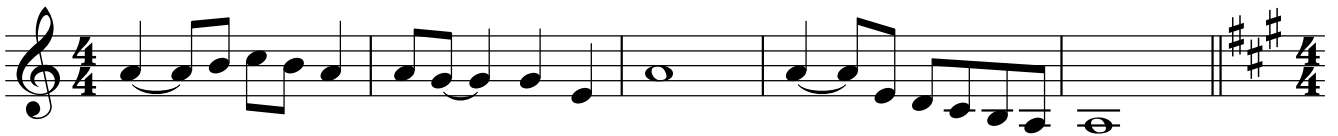
When a dot is applied to a note, it increases the value of the note by half it's original value. A crotchet (1 count) with a dot has another half a beat added to it giving it a total of one and a half beats.

Write the counts underneath this exercise



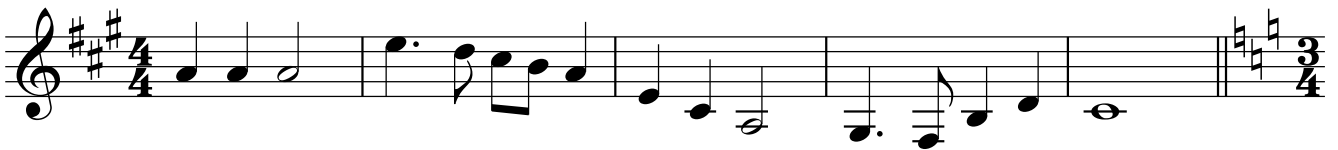
A dotted crotchet could also be written as a tied note but it is more common to see the dot. The rhythm is counted the same as a dotted crotchet.

Complete this exercise with tied notes. Write the counts underneath

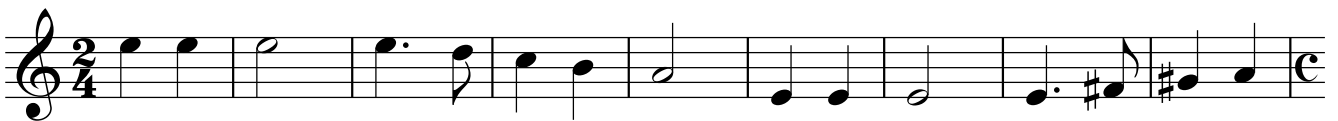


Notice the tie in reverse with the quaver beat first.

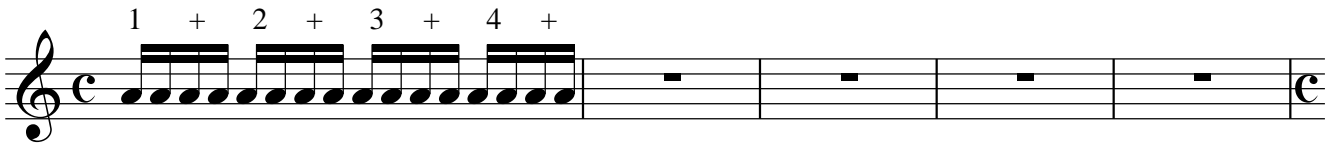
**EXERCISES TO COMPLETE
WRITE THE COUNTS UNDER THE NOTES**



This shows a change of key signature



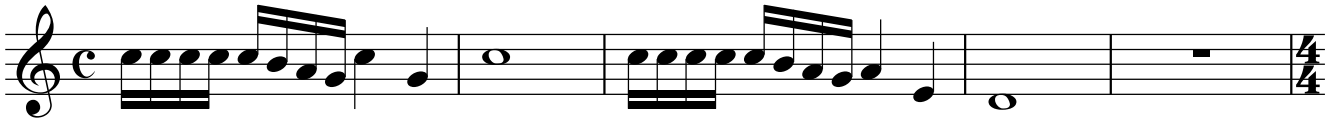
SEMIQUAVERS



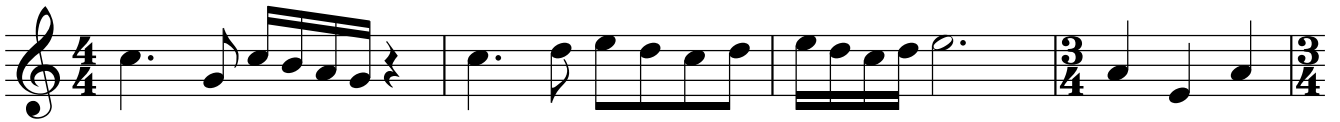
A musical staff in common time (C) showing four groups of four semiquavers. Above the first group are the numbers 1, 2, 3, and 4, each followed by a plus sign (+). The rest of the staff contains four measures of whole rests.

*Semiquavers 1/4 of a beat
4 make one crotchet beat in 4/4 time signature*

Use these exercise to practise counting semiquavers



A musical staff in common time (C) with a 4/4 time signature. It contains two measures of semiquaver patterns: the first measure has a group of four semiquavers followed by a quarter note, and the second measure has a group of four semiquavers followed by a half note.



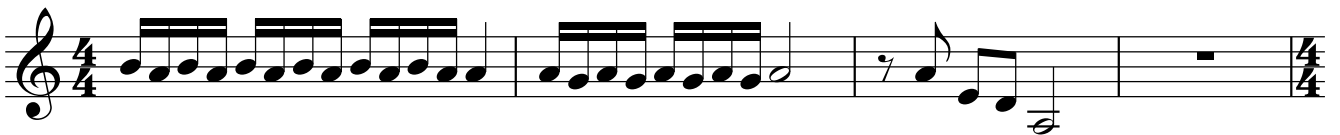
A musical staff in 4/4 time signature. It contains four measures: the first has a quarter note followed by a group of four semiquavers; the second has a quarter note followed by a group of four semiquavers; the third has a group of four semiquavers followed by a quarter note; the fourth has a group of four semiquavers followed by a quarter note.



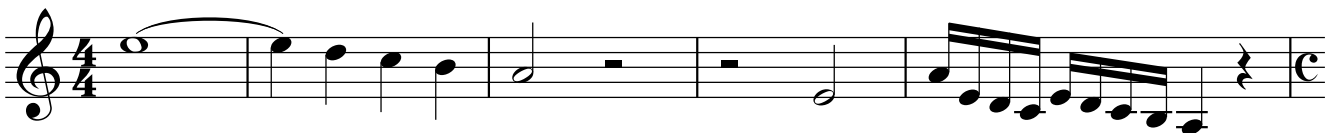
A musical staff in 3/4 time signature. It contains four measures: the first has a quarter note followed by a group of four semiquavers; the second has a group of four semiquavers followed by a quarter note; the third has a quarter note followed by a group of four semiquavers; the fourth has a quarter note followed by a group of four semiquavers.



A musical staff in 4/4 time signature. It contains four measures: the first has a quarter note followed by a group of four semiquavers; the second has a quarter note followed by a group of four semiquavers; the third has a quarter note followed by a group of four semiquavers; the fourth has a quarter note followed by a group of four semiquavers.



A musical staff in 4/4 time signature. It contains four measures: the first has a group of four semiquavers followed by a quarter note; the second has a group of four semiquavers followed by a quarter note; the third has a quarter note followed by a group of four semiquavers; the fourth has a quarter note followed by a group of four semiquavers.



A musical staff in 4/4 time signature. It contains four measures: the first has a quarter note followed by a group of four semiquavers; the second has a quarter note followed by a group of four semiquavers; the third has a quarter note followed by a group of four semiquavers; the fourth has a quarter note followed by a group of four semiquavers.



A musical staff in common time (C) with a 4/4 time signature. It contains four measures: the first has a quarter note followed by a group of four semiquavers; the second has a quarter note followed by a group of four semiquavers; the third has a quarter note followed by a group of four semiquavers; the fourth has a quarter note followed by a group of four semiquavers.

6 **LEDGER LINES**

F G A B C D E F G
E F G A B C D E

F A C E
E G B D F

The easiest way to learn ledger lines is to remember FACE and Every Good Boy Deserves Fruit. These patterns continue as ledger lines. Look at the examples and then practise naming notes yourself.

E G B D F
F A C E

Write the letter of the note underneath

LEDGER LINES -BASS CLEF

A G F E D C B A G F B C D E F G A B

Patterns also exist on the bass clef

A C E G G B D F A

All Cows Eat Grass

Gum Boots Do Feel Awful

A C E G G B D F A

Practise naming ledger notes.

Write the name of the note underneath

Practice staves with notes and accidentals for naming.

OCTAVES

Octaves appear every eight notes and have the same letter.

WRITE HOW MANY OCTAVES ARE BETWEEN THESE NOTES

TIME SIGNATURE 6/8

6/8 time signature has six quaver pulses, but is counted in two beats of a dotted crotchet. The accents fall on the first quaver and fourth quaver as shown below.

Where music divides into groups of three notes to a beat it is called compound time.

TEST

NAME THE TYPE OF NOTE AND HOW MANY BEATS IT RECEIVES IN THIS TIME SIGNATURE`

WRITE IN THE COUNTS

NAME THESE NOTES

The image shows a musical score for two staves. The top staff is in treble clef with a key signature of one sharp (F#). It contains a sequence of notes: a quarter note F#, a quarter rest, a quarter note G, a quarter note A, a quarter note B, a quarter note C, a quarter note D, a quarter note E, and a quarter note F. The bottom staff is also in treble clef and contains a sequence of notes: a quarter note F, a quarter note G, a quarter note A, a quarter note B, a quarter note C, a quarter note D, a quarter note E, a quarter note F, a quarter note G, a quarter note A, a quarter note B, and a quarter note C. The piece concludes with a double bar line.

Well done on making it this far.

COMMENTS